

ExperiLAB (Solvay)



Ei

SOLVAY



XperiLAB.be®



natural
sciences
.be



XperiLAB.be® is

XperiLAB :

A 16-meter long, 32-ton truck that brings Science to life.

A traveling laboratory designed to initiate children in science through hands-on experiments.

XperiLAB is:

- A science truck
- Touring throughout Belgium
- Exceptionally outside Belgium (for events)
- Supervised by an animator (NL/FR/GE)

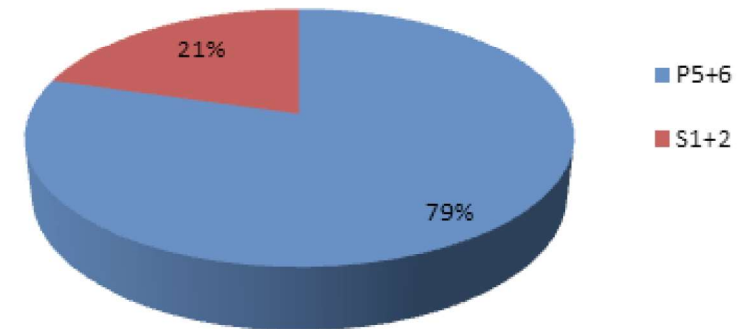


Target

To propose an original and fun way of learning scientific methodology and understanding the key elements of our environment while nourishing mentalities to meet the challenges of tomorrow.

- Target group: 10- to 14-year-old (5th grade of primary school up to 2^d year of high school)
- Stimulate interest in science
- Encourage the study of sciences (STEM)

Structure par âge - Leeftijdsverdeling



The common thread in XperiLAB.be®

9 labs for 45-minute experiments with 2 animators.

The tool does not pretend to replace science teaching, it is complementary with a scientific approach:

- Observe
- Make a hypothesis
- Experience
- Deduct



How?

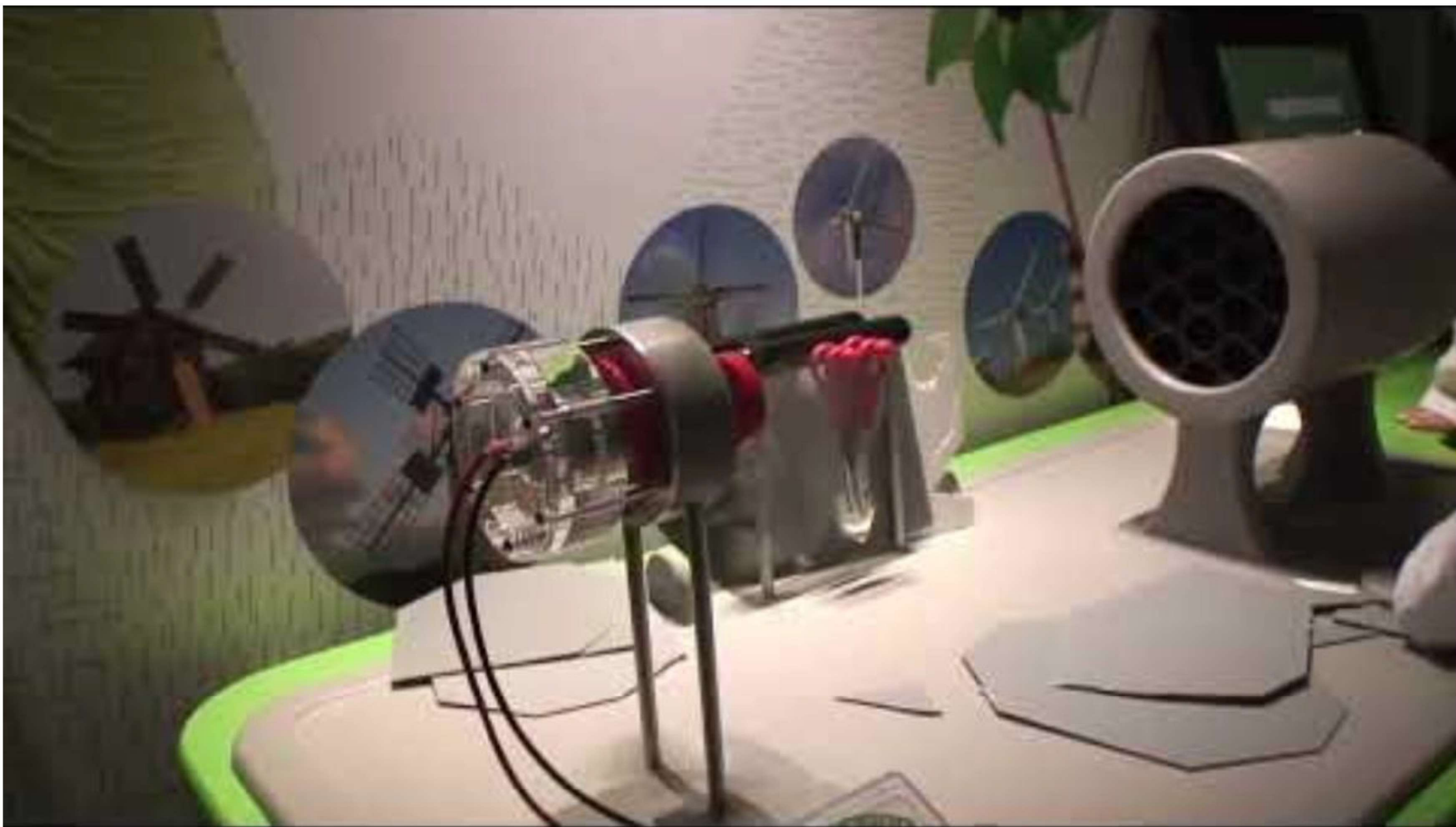
Before: The students and their teacher receive a file to prepare their visit to the truck.

During:

- 3 themes, students divided into 3 groups
- 9 set-ups, 3 per group
- topics include: wind and solar energy, insulation, colours, hydrodynamics, making your own toothpaste...
- Concluding common experiment

After: The teachers can download the didactic file presenting the topics discussed providing some directions to follow to extend the activities, back in the classroom





XperiLAB.be® in figures

- Close to 10000 participants per year:
- 50% Dutch-speaking BE
- 42% French-speaking BE
- 8% German-speaking BE

In Numbers

13

Years of activity

1935

Partner Schools

120 048

Young people

Booking via website

- Sold out annually + waiting list
- 3 euros per pupil
- Schools can participate once every two years

XperiLAB.be

[IN PRAKTIJK ▼](#)

[DE STICHTING](#)

[CONTACT](#)

[NL ▼](#)



Governance

- FEI (Enterprise Institute Foundation)
- Cooperation between Solvay and Royal Belgian Institute of Natural Sciences



SOLVAY